



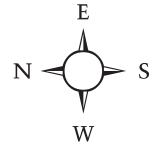
CRESLEIGH PEAKS

The Manor Collection



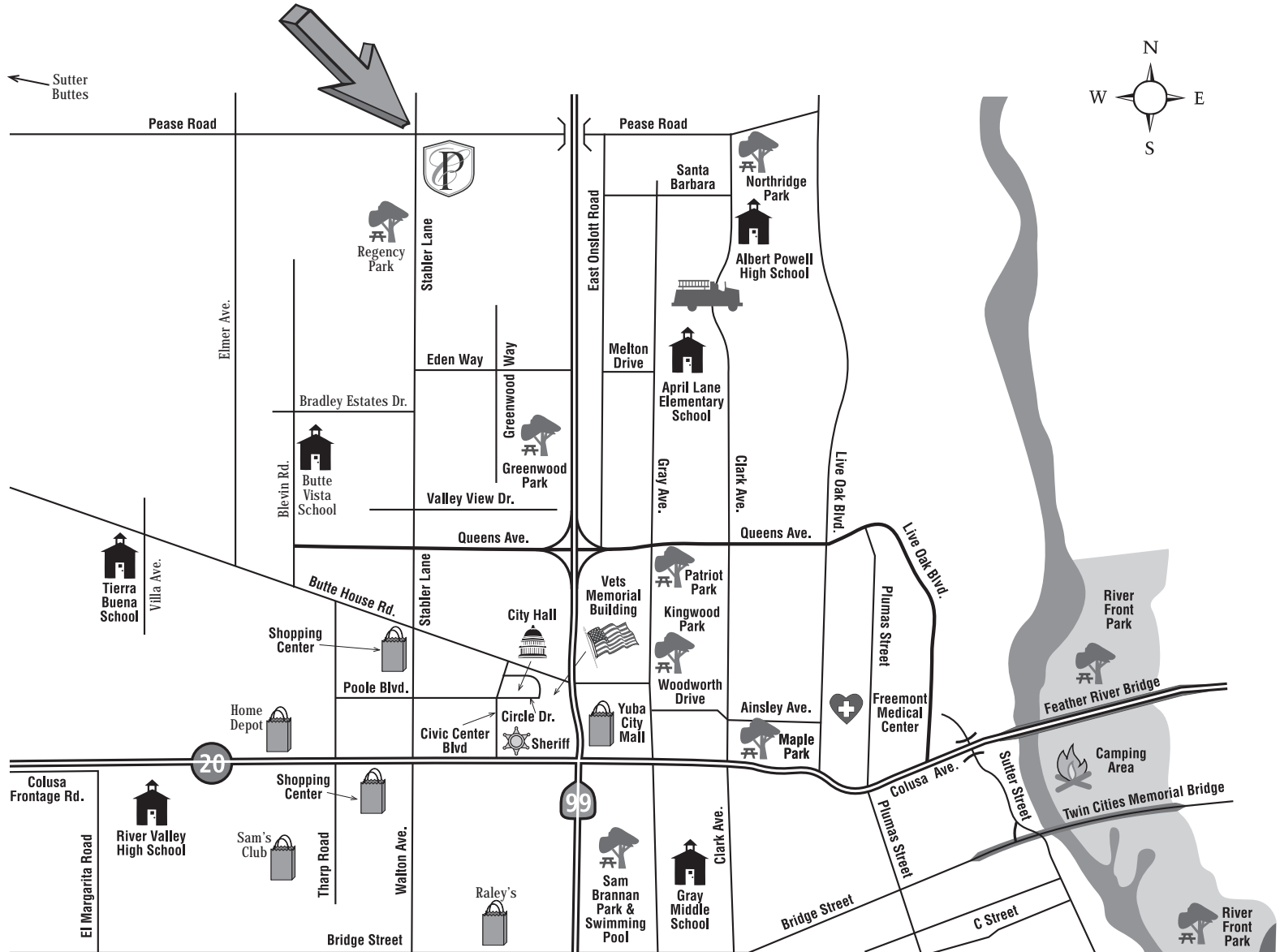
Sales Office

1609 Chandler Way, Yuba City, California 95993
Phone: (530) 790-7900 Fax: (530) 790-0900





Welcome to Yuba City



Included Features

INVITING EXTERIOR

Three distinctive architectural elevations per plan
Designer selected exterior color palette
Long lasting concrete tile roofs in a variety of color choices
Front yard with sod lawn, shrubs, tree, and automatic irrigation
Upgraded wood fencing
Garage door with quieter and stronger foam core steel roll-up panels
Elegant 8' entry door (per plan)
Inviting covered entry porch (per plan)
Reinforced broom-finish concrete driveway and walkway
Exterior insulated hose bibs in front and rear yards
Weatherproof exterior electrical outlets in front and rear
Upgraded rain gutters
Low maintenance stucco exterior with premium acrylic paint
Pre-wired for garage door opener for double car garage

GRACIOUS LIVING AREAS

Natural gas burning fireplace with glass doors (per plan)
Inviting ceramic tile at the entry, kitchen and nook, laundry, and bathroom floor (as shown)
Wall-to-wall carpeting in living areas
Volume ceilings throughout (per plan)
Elegant raised panel interior doors
Graceful rounded interior wall corners
Colonial-style door casings and baseboards
Decorator selected interior and exterior light fixtures
Designer style rocker switches for electrical outlets (per room)
Dimmer switched lighting to meet latest energy efficient code
Pre-wired for ceiling fan in master bedroom and family area
Pre-wired for cable television in master bedroom and family area
Abundant linen storage
Pre-wired for telephone with Category 5 wiring in kitchen, family room and all bedrooms
Convenient interior laundry w/ electric hook-up for washer & dryer

GOURMET KITCHEN

Natural Granite Slab Countertop
Center work island with eating bar (per plan)
Airy breakfast nook
Spacious pantry
High quality beech cabinetry with concealed hinges
General Electric double oven and sealed burner gas cook top with microwave hood
General Electric multi-cycle dishwasher
White or Black appliances
Kohler cast iron dual kitchen sinks w/ pull out faucet
1/2 horsepower garbage disposal
Water line with recessed valve hookup for icemaker
Recessed ceiling fluorescent can lights

COMFORTABLE MASTER SUITES

Solid surface vanity top & tub/shower surround
Generous walk-in closet with mirrored door
Oval-shaped soaking tub
Separate stall shower with glass enclosures
Single-lever vanity faucets
Upgraded chrome bath accessories and fixtures
Medicine cabinet
Private water closet with exhaust fan
Exhaust fan at shower area
High quality beech cabinets with concealed hinges

PLEASE NOTE: Cresleigh Homes reserves the right to change plans, specifications, features and prices without notice.

Renderings and floorplans are artist's conceptions and are not to scale. Enhanced landscaping and masonry wainscot shown are not standard.





INVESTMENT PROTECTION

Hardwired smoke detectors with battery backup
Pre-wired for security system
Frame Treatment with Bora Care or subterranean termite control
Special measures to reduce water vapor transmission through the concrete slab
Heavy-duty foam core insulated garage doors
Engineered roof truss system
Steel reinforced foundations
High quality building materials & workmanship that adds lasting value

ENERGY SAVING FEATURES

Ceiling insulation: R-38
Exterior wall assembly: R-17
Gas forced-air heating with integral air conditioning (13 SEER)
Energy saving dual zone control (two story plans)
Programmable setback thermostat
40-gallon water heater with internal insulation
Energy efficient low E squared dual-pane vinyl windows
Upgraded exterior doors with pressure weather stripping
Energy and water-saving showerheads, faucets and toilets
Dupont Tyvek house wrap

CUSTOMIZED UPGRADE OPTIONS

Optional room configurations (per plan)
Elegant upgraded entry door in a variety of styles
Upgraded flooring—carpeting, ceramic tile, marble, granite, and hardwood
Graceful full-height bay window in master bedroom and/or nook (per plan)
Natural or stained raised panel cabinets, with decorative crown molding in a variety of wood choices
Glass upper cabinet doors and shelves in kitchen (per plan)
Clear or beaded glass French door at pantry
Tech Center at game room (per plan)
Wet bar at game room or bonus room (per plan)
Stainless steel or colored cast iron kitchen sink

UPGRADE OPTIONS (continued)

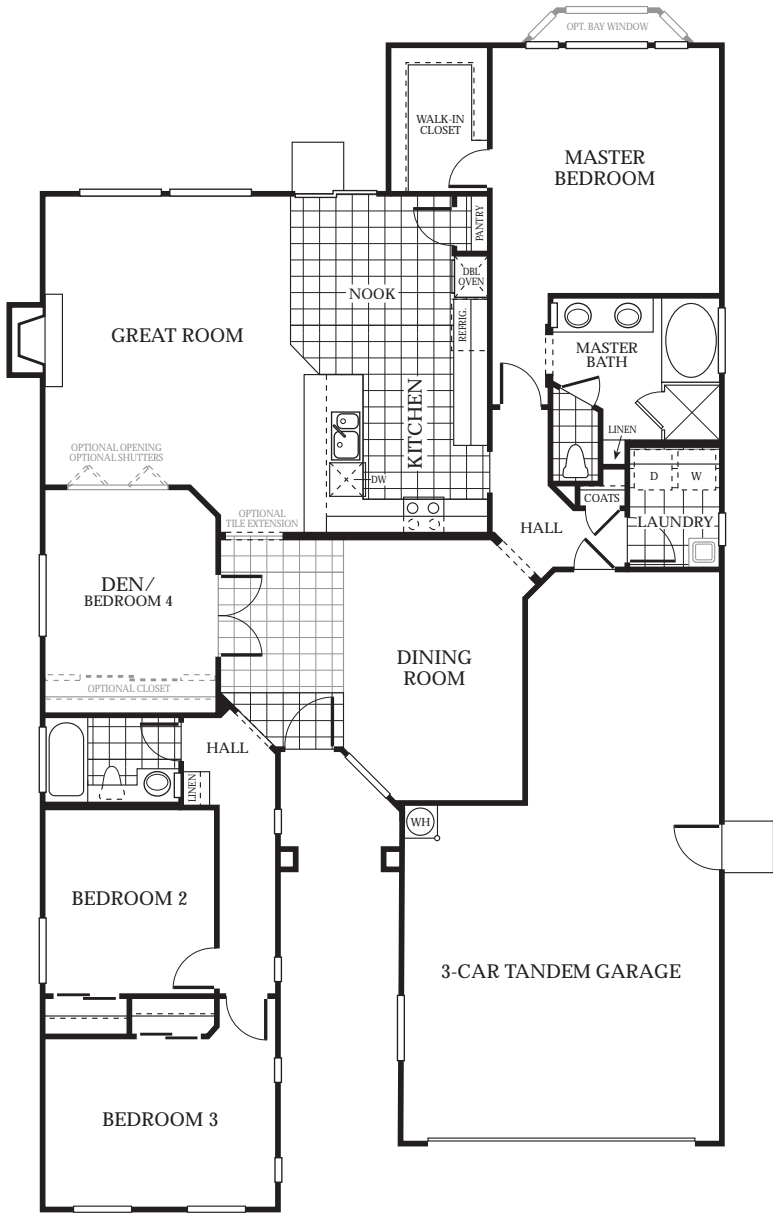
Hot/cold filtered water dispenser with upgraded faucet
Instant hot water dispenser with upgraded faucet
Upgraded stainless steel appliance package
Extra quiet multi-cycle dishwasher
Under-cabinet task lighting and/or over-cabinet up-lighting
Upgraded designer interior and exterior light fixtures
Fashionable recessed can lights with dimmer switches
Pre-wire for home theater
Family room fireplace (per plan)
Double French doors with side lights at den (per plan)
Crown molding and/or coffered ceilings in selected areas
Reversible 5-blade ceiling fan with or without light kit
Jetted tub in master bath
Clear glass tub/shower enclosures for secondary baths
Tile at vanity and tub/shower at master and secondary baths
Solid Surface tub and shower surrounds at secondary baths
Mirror closet doors in secondary bedrooms
Privacy door at master bath (per plan)
Laundry sink and faucet
Gas connection to dryer
Security alarm system
Intercom system
Built-in vacuum system
Pre-wired for opener in single-car garage
Garage door opener for double and/or single-car garages
Permatron electrostatic air filter
Decorative garage door windows
Exterior brick or cultured stone masonry veneer
Two color interior paint scheme
Shutters at drywall opening (per plan)
Stair rail w/ iron or wood balusters & paint grade wall skirt to match cabinets (per plan)
Upgraded balcony rail (per plan)



The Logan

Single-story, Approx. 1,850 Square Feet

Three Bedrooms, Den, Two Baths, Three-car Tandem Garage.





The Logan

Single-story, Approx. 1,850 Square Feet.

Three Bedrooms, Den, Two Baths, Three-car Tandem Garage.



ELEVATION A



ELEVATION B



ELEVATION C

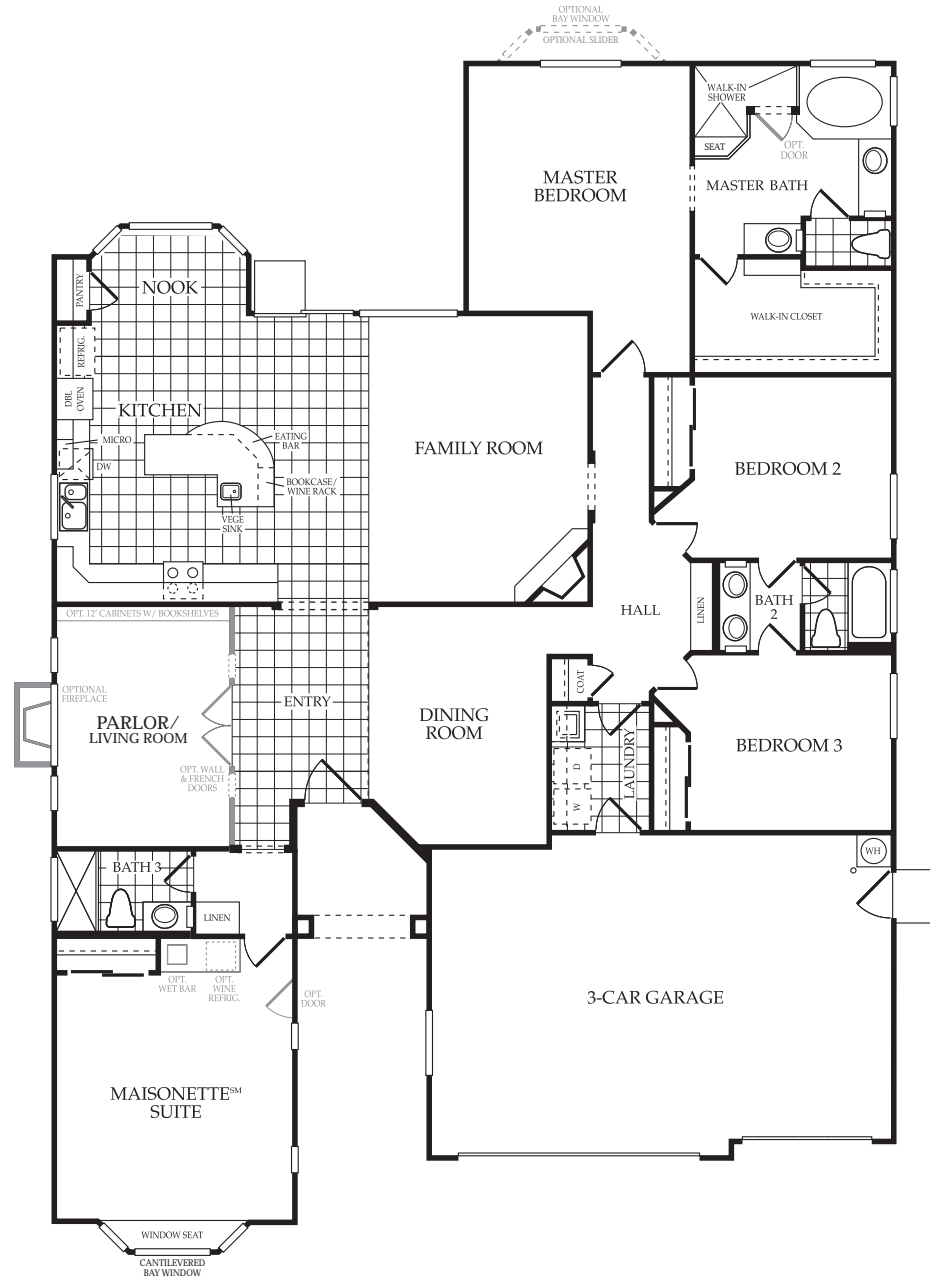
Cresleigh Homes reserves the right to change plans, specifications, features and prices without notice. Renderings and floorplans are artist's conceptions and are not to scale. Enhanced landscaping and masonry wainscot shown are not standard. Front window design varies by elevation. See Sales Coordinator for elevation details. Plan 6. (Rev 1.22.14)





The Pikes

Single-story, Approx. 2,535 Square Feet.
Four Bedrooms, including Maisonette Suite™, Three Baths, Three-car Garage.



Cresleigh Homes reserves the right to change plans, specifications, features and prices without notice. Renderings and floorplans are artist's conceptions and are not to scale. Enhanced landscaping and masonry wainscot shown are not standard. Front window design varies by elevation. See Sales Coordinator for elevation details. Plan 10. (Rev 2.6.14)

The Pikes

Single-story, Approx. 2,535 Square Feet.
Four Bedrooms, including Maisonette Suite™, Three Baths, Three-car Garage.



ELEVATION A

This home is the benchmark of style. The gourmet kitchen includes a nook for informal meals, a large kitchen island looks onto a spacious family room. For a home within a home, take a peak at our Maisonette Suite, perfect for in-laws, older children or guests.



ELEVATION B



ELEVATION C

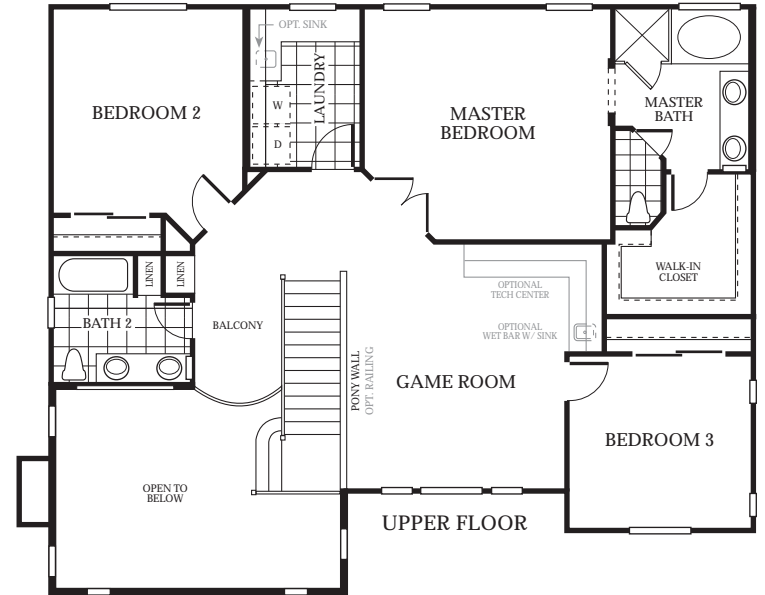
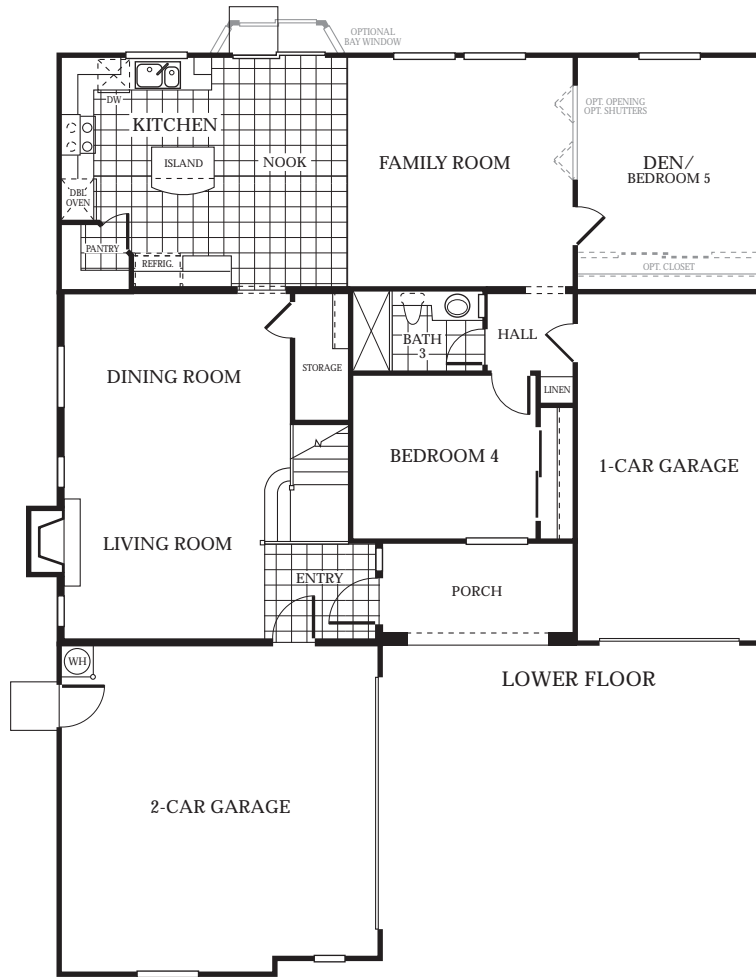
Cresleigh Homes reserves the right to change plans, specifications, features and prices without notice. Renderings and floorplans are artist's conceptions and are not to scale. Enhanced landscaping and masonry wainscot shown are not standard. Front window design varies by elevation. See Sales Coordinator for elevation details. Plan 10. (Rev 2.6.14)





The Whitney

Two-story, Approx. 2,640 Square Feet.
Four Bedrooms, Den, Game Room, Three Baths, One-car Garage
and Two-car Garage.





The Whitney

Two-story, Approx. 2,640 Square Feet.
Four Bedrooms, Den, Game Room, Three Baths, One-car Garage
and Two-car Garage.



ELEVATION A



ELEVATION B



ELEVATION C

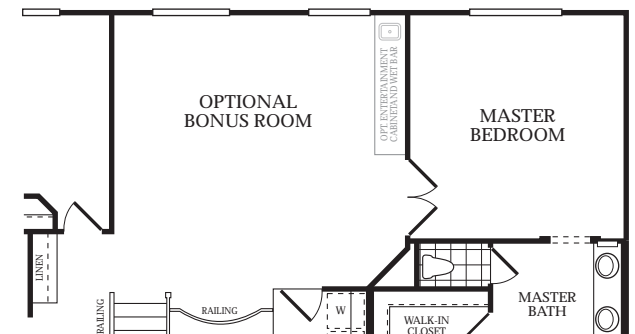
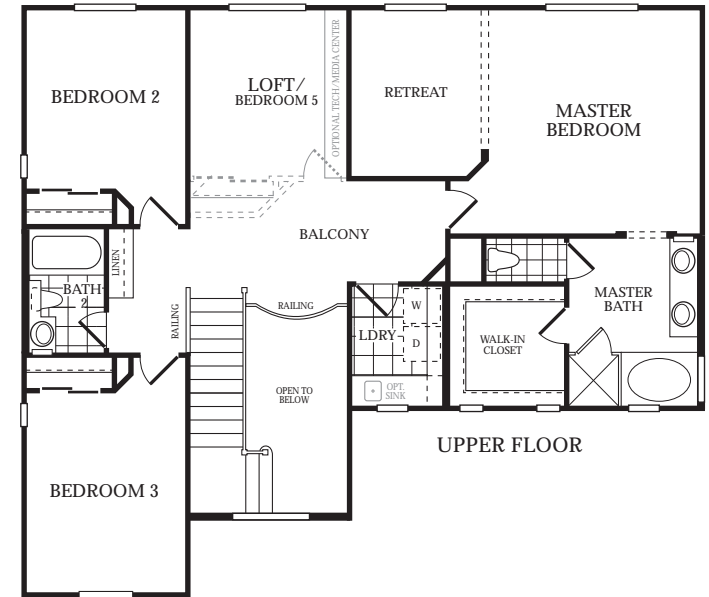
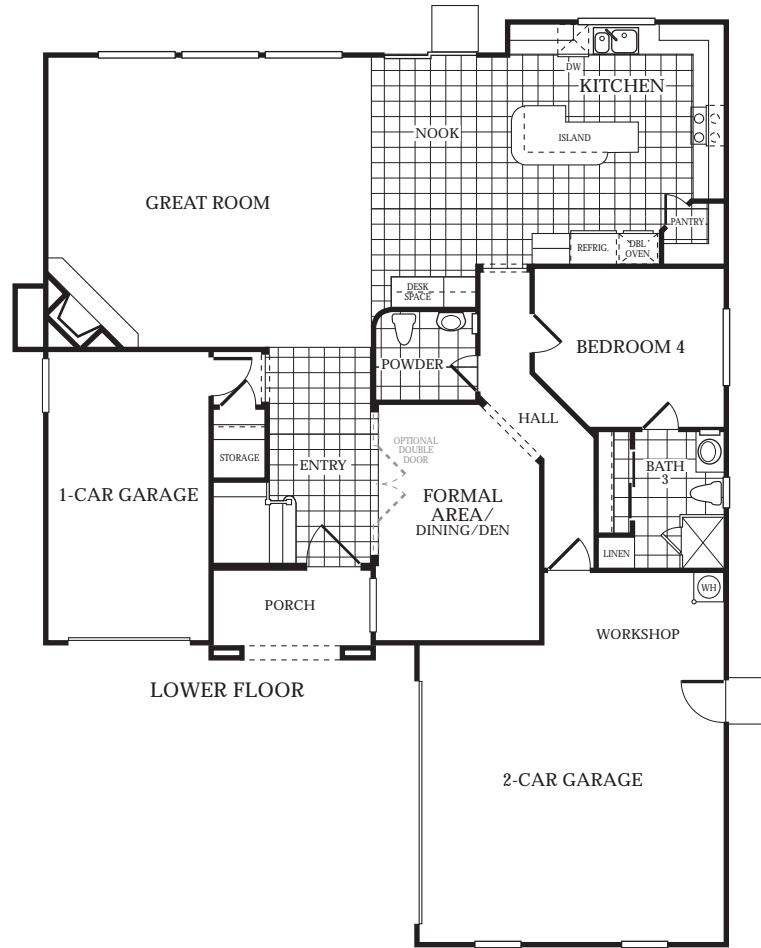
Cresleigh Homes reserves the right to change plans, specifications, features and prices without notice. Renderings and floorplans are artist's conceptions and are not to scale. Enhanced landscaping and masonry wainscot shown are not standard. Front window design varies by elevation. See Sales Coordinator for elevation details. Plan 9. (Rev 1.22.14)





The Emerson

Two-story, Approx. 2,721 Square Feet
 Four Bedrooms Plus Master Retreat, Loft, Formal Area,
 Three and One-Half Baths, One-car Garage and Two-car Garage,
 Optional Bonus Room.





The Emerson

Two-story, Approx. 2,721 Square Feet
Four Bedrooms Plus Master Retreat, Loft, Formal Area,
Three and One-Half Baths, One-car Garage and Two-car Garage,
Optional Bonus Room.



ELEVATION A



ELEVATION B



ELEVATION C

Cresleigh Homes reserves the right to change plans, specifications, features and prices without notice. Renderings and floorplans are artist's conceptions and are not to scale. Enhanced landscaping and masonry wainscot shown are not standard. Front window design varies by elevation. See Sales Coordinator for elevation details. Plan 8-III. (Rev 1.22.14)

